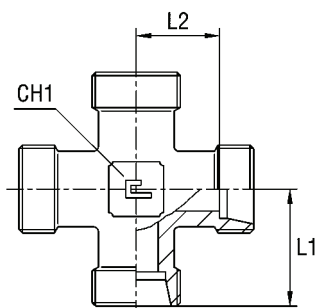
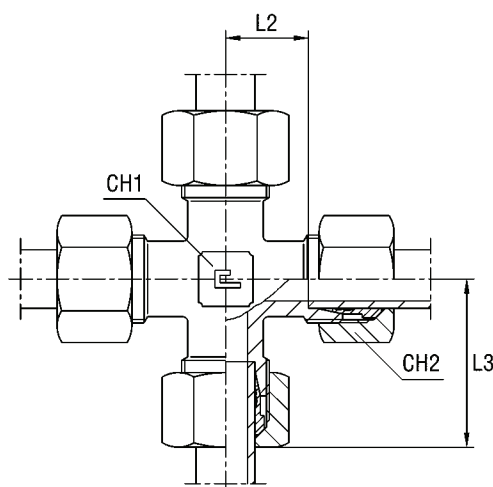


EQUAL CROSS

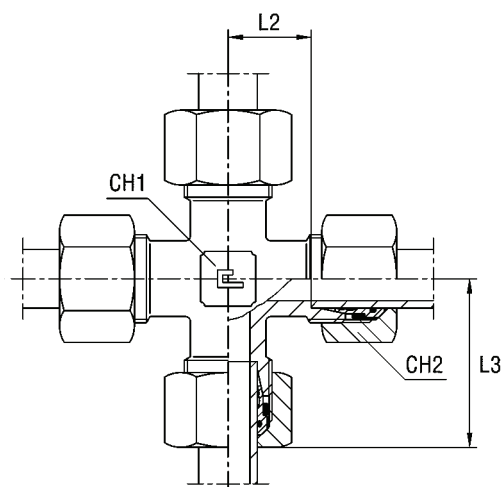
Type: 1040...1 Only Body



Type: 1040... B3 Ring



Type: 1040...4 B4 Ring



Serie	Bar	Ordering Body	Ordering Equipped B3	Ø Tube	L1	L2	L3	CH1	CH2	Ordering Equipped B4
LL	100	104001.1	104001	4	15	11	21	9	10	
		104002.1	104002	6	15	9,5	21	9	12	
		104003.1	104003	8	17	11,5	23	12	14	
L	315	104004.1	104004	6	19	12	27	12	14	104004.4
		104005.1	104005	8	21	14	29	12	17	104005.4
		104006.1	104006	10	22	15	30	14	19	104006.4
		104007.1	104007	12	24	17	32	17	22	104007.4
		104008.1	104008	15	28	21	36	19	27	104008.4
		104009.1	104009	18	31	23,5	40	24	32	104009.4
	160	104010.1	104010	22	35	27,5	44	27	36	104010.4
		104011.1	104011	28	38	30,5	47	36	41	104011.4
		104012.1	104012	35	45	34,5	56	41	50	104012.4
		104013.1	104013	42	51	40	63	50	60	104013.4
S	630	104014.1	104014	6	23	16	31	12	17	104014.4
		104015.1	104015	8	24	17	32	14	19	104015.4
		104016.1	104016	10	25	17,5	34	17	22	104016.4
		104017.1	104017	12	29	21,5	38	17	24	104017.4
		104018.1	104018	14	30	22	40	19	27	104018.4
	400	104019.1	104019	16	33	24,5	43	24	30	104019.4
		104020.1	104020	20	37	26,5	48	27	36	104020.4
		104021.1	104021	25	42	30	54	36	46	104021.4
		104022.1	104022	30	49	35,5	62	41	50	104022.4
		315	104023.1	104023	38	57	41	72	50	60

Note: If you wish to order a fitting in stainless steel, please change the first two digit from 10.. to 11..